

GLBE

北大-金杜全球高端法商人生计划

The PKU-KWM Global Legal and
Business Executive Program

破理论藩篱，坚持问题导向，聚焦综合素能，我们面向实务；
持中国经验，围绕国家战略，回应时代主题，我们面向世界；
秉博雅精神，塑造天下情怀，孕育创新力量，我们面向未来。

Breaking theoretical barriers, we face problems with resolve;
Focusing our extensive capabilities, we respond to real-world demand;
Cherishing our experience in China, we study its evolving statecraft;
Confronting the issues of our times, we tackle global challenges;
Embracing the spirit of Peking University, we face the world with confidence;
Paving the way for the growth of innovative talent, we walk firmly towards the future.

目录 CONTENTS

04

项目简介
Program Introduction

主办机构
Founding Institutions

项目优势
Program Highlights

丰硕成果
Successful Results

09

课程师资
Faculty Members

14

课程概览
Program Overviews

“未来领袖”班
The “Future Leaders” Program

24

同学寄语
Messages from
Our Alumni

26

第二课堂
GLBE - From the
Classroom and Beyond

28

具体招生和
项目运行信息
Admissions and Enquiries

项目简介 PROGRAM INTRODUCTION

主办机构 Founding Institutions

北大金杜全球高端法商人才计划（The PKU-KWM Global Legal and Business Executive Program，以下简称 GLBE）由北京大学法学院与金杜公益基金会、金杜律师事务所和金杜学院共同发起，旨在凝聚智识资源与实务经验，以打造立足中国、面向世界的高端法商人才成长平台。

北京大学法学院开中国现代法学教育之先河，业绩成果在国内朋辈中首屈一指。凭借雄厚的教学科研实力和国际影响力，在近年国际权威排名中，北大法学院综合排名稳居全球TOP20、大陆法系国家第1名，权威机构认定的人才培养能力稳居全球前10名，在此领域已率先步入世界一流。在当前的北大法学院，悠久的历史沉淀和持续发展所带来的丰富资源，使得建设目标高远、效果显

著的高端人才培养平台成为大势所趋，蓄势待发。

金杜律师事务所是中国改革开放及法治建设的大环境下成长起来的中国顶级律师事务所，也是全球首家总部位于亚洲，在中国大陆、香港特别行政区、澳大利亚、欧洲、中东、日本与美国等多法域具有执业能力的国际性律师服务机构，近年来稳居亚太律所品牌索引第1位和全球精英律所品牌索引前列，被公认为亚太地区最具创新力的律师事务所。金杜律师事务所作为综合性律师事务所，在公司并购、证券与资本市场、金融融资、商业合规、争议解决、知识产权等各个领域引领市场并拥有一批领军型人物，蕴藏着中国法治建设、法律和商业实践以及法律人才培养的丰富资源和宝贵经验。面向未来，伴随全球业务疆域广度和深度的扩展，金杜律师事务所已经发展成为一个多维边界不断延展的全球高端法商人才成长平台。



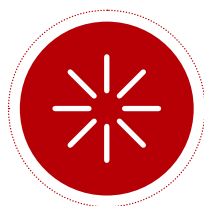
KING & WOOD
MALLESONS
金杜律师事务所

The PKU-KWM Global Legal and Business Executive Program (GLBE) is established by Peking University (PKU) Law School and KWM Foundation, King & Wood Mallesons and KWM Academy. Supported by the collective knowledge, resources and practical experience of these founding institutions, GLBE creates a world-class, China-based platform dedicated to cultivating senior legal professionals and business executives.

GLBE brings together two pre-eminent institutions, PKU Law School and King & Wood Mallesons. PKU Law School, pioneer of modern legal education in China, has long been at the forefront of legal education. PKU Law School enjoys exceptional teaching and research capabilities and is internationally renowned. Ranking as the leading legal educational institution in all civil law jurisdiction countries and one of the top 20 law schools in the world, it is also among the top ten institutions globally in terms of its ability to develop leadership talent. PKU Law School offers extensive resources distilled over the years and uniquely reflecting the spirit of PKU Law School and its continual path of development. These formidable resources are now poised for active deployment through a new platform to address the growing need for leadership development.

Benefiting from China's economic reform and promotion of the rule of law, King & Wood Mallesons has transformed itself into a top-tier law firm in China. With offices in Mainland China, Hong Kong SAR, Australia, Europe, the Middle East, Japan and the U.S., King & Wood Mallesons is the first international law firm headquartered in Asia. The firm consistently tops the Asia Pacific Law Firm Brand Index and is among the frontrunners of the AcritasSharplegal Global Elite Brand Index. King & Wood Mallesons is acknowledged as the most innovative law firm in the Asia-Pacific region. As a market leader in a wide range of practices, including mergers & acquisitions, securities & capital markets, banking & financing, commercial compliance, dispute resolution and intellectual property, King & Wood Mallesons and its team of distinguished lawyers have accumulated invaluable experience as they have participated in the development of China's rule of law, the maturing of legal and business practices, and the rising prominence of legal practitioners. With a strong commitment to the future, King & Wood Mallesons has been increasing its depth and scale as it has pursued expanding global business opportunities. King & Wood Mallesons now offers a unique multifaceted, global platform to support the development of future leadership in law and business.

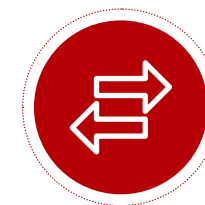
项目优势 Program Highlights



创新的培养理念 Innovative Concept of Education

法者，治之端也；商之大者，为国为民；法商共融，知行致远。GLBE围绕全球化与国家治理现代化的时代主题，服务国家与全球发展战略，以法治思维与商业能力培养为路径，聚焦社会发展的真实经验与人力资源需求，跨越法律、商业及社会各领域的认知鸿沟，以知识的跨界实现智慧的整合，塑造面向世界和未来、复合法律与商业、兼备情怀与能力、兼顾责任与创新的实务型、领袖型人才。

It has been said that: law is the very foundation of governance; business can be a significant force for the good of the State and people; combining legal and business resources and complementing theory with practice will take us far. GLBE addresses timely themes of globalization and modernizing national governance and explores Chinese statecraft and global development strategies through the use of legal reasoning and business acumen. GLBE focuses on understanding the real experiences of social development and responding to the need for leadership talent. In doing so, GLBE seeks to bridge the gaps between legal, commercial and other disciplines, to integrate cross-discipline knowledge and to help develop legal and business leadership talent who are compassionate, innovative and pragmatic - willing to embrace the world and the future.



体验型学习方式 Experiential Learning Approach

理论课程以知促识，开拓学员理论视野，丰富知识格局；对话课程以辩促辨，提升学员思辨能力，塑造创新思维；实训课程以练促能，赋予学员实景体验，促进素能提升。

GLBE为学员提供自主开发的体验式、参与式、思辨式的教学系统，实施具有创新性意义的课程体系。课程内容涵盖多视界理论、创新型思维、复合型技能等维度的素质拓展与训练，教学形式包括理论启发与知识传授、苏格拉底式对话与共同思考、实景模拟与沙盘训练，辅以贯穿国内外实地调研的科研任务和实习实践，唯以学员“认知自己、突破瓶颈”为目的。

Theoretical lectures enhance participants' conceptual understanding of the topics covered and widen their breadth of knowledge. Discussions and debate sessions improve participants' ability to think creatively and critically. "Sandbox" simulation training enhances participants' problem-solving capabilities.

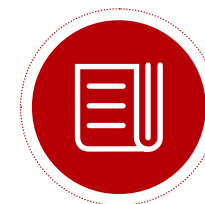
GLBE offers a series of experiential-based, engaging, and thought-provoking teaching approaches to assist participants in self-directed personal development. Coursework is designed to develop participants' personal comprehensive capabilities including inter-disciplinary knowledge, innovation, and integrated skillsets. Furthermore, central to the GLBE teaching approaches, is the use of the Socratic-method of learning and situational practice. This teaching method is supplemented by field trips and research assignments conducted both in China and abroad.



雄厚的师资力量 Deep Faculty Resources

GLBE的师资来自在法律、经济、管理、金融、政治、文化、科技及环境等领域享有盛名的国内外专家学者和业内顶尖人士。律界翘楚、商界精英、政界官员、学界专家、创业先锋齐聚于此，与学员一道展开法商对话，洞察发展趋势，凝聚时代共识，共塑未来领袖。

Faculty members of GLBE are experts, scholars and industry-leading figures from China and abroad. Their areas of expertise include law, economics, business, finance, politics, culture, technology, and environment. Leading legal practitioners, elite business executives, prominent government officials, renowned academics and successful entrepreneurs will share their experiences and exchange their ideas with participants. Collectively they will help shape leadership by opening a legal-business dialogue, providing informed insights into development trends and distilling a mutual understanding about contemporary issues.



复合型教育认证模式 Combined Certification Model

GLBE采取“高端培训+学位教育”的课程认证模式。课程收费采取学员交费和主办方提供奖学金相结合的机制。学员可以根据自身需要选择课程认证方式：高端培训课程结业后获得主办机构颁发的结业证书；高端培训课程结业后，境外学员可以继续以此为基础申请学位教育，完成学位教育课程并符合相应条件者获得北京大学法学院硕士以上学位。

GLBE adopts a "high-end training course plus degree program" certification system. Scholarships are available for eligible participants. Participants receive a Certificate of Completion from the organizers upon completion of the leadership training. With the certificate, overseas participants may then apply to a graduate degree program at PKU Law School. Those who satisfy requirements of the degree programs will receive a master's or higher graduate degree from PKU Law School.

丰硕成果 Successful Results

GLBE经过首期“未来领袖”班的创设和实践，积累了成功经验，取得丰硕成果。未来，“未来领袖”学员将共同参与打造GLBE项目成果：

“未来领袖”创新社区

GLBE将尝试引入海内外智识资源，吸引高层次创新创业人才，探索创建学研产一体的，服务于“未来领袖”课程、高端创新创业者以及地区文化经济社会的高水准新型社区。

“未来领袖”发展基金

GLBE计划筹集和设立“未来领袖”发展基金，用以支持和资助符合“未来领袖”要求的北京大学法学院优秀学生以及优秀创新创业项目。

The first “Future Leaders” class is now behind us. It has yielded a rich experience for the participants and provides a base of accumulated experience to apply to coming classes. In coming years, “Future Leaders” alumni will be able to continue to contribute to and be enriched by the success of the GLBE program:

“Future Leaders” Innovation Community

GLBE plans to bring together domestic and international knowledge resources and attract high-level innovative and entrepreneurial talent. Doing so will help create a sophisticated new community integrating academia, industry and research, supporting the “Future Leaders” Program, and bringing together leading innovators and entrepreneurs in culture, economy and society.

“Future Leaders” Development Fund

GLBE plans to establish a “Future Leaders” Development Fund offering financial aid to outstanding students of Peking University Law School who meet the requirements for “Future Leaders” and providing funding for extraordinary innovative entrepreneurial projects.

课程师资 FACULTY MEMBERS

课程总顾问成员 | Advisory Board

王俊峰 Wang Junfeng

全国人大代表，金杜律师事务所全球主席，法学博士
Deputy to National People's Congress, Global Chairman of King & Wood Mallesons, J.S.D.

王振民 Wang Zhenmin

中央人民政府驻香港特别行政区联络办公室法律部部长，法学博士
Head of the Legal Department of the Liaison Office of the Central People's Government in Hong Kong Special Administrative Region, J.S.D.

邓中翰 Deng Zhonghan

中国工程院院士，中星微集团创建人、董事长，电子工程与计算机科学博士
Academician of the Chinese Academy of Engineering, Founder and Chairman of Vimicro Group, PhD in Electrical Engineering & Computer Science

朱永新 Zhu Yongxin

全国政协常委兼副秘书长，中国民主促进会中央委员会副主席，中国教育学会副会长，新教育实验发起人
Member of the Standing Committee and Deputy Secretary General of the National Committee of the CPPCC, Vice Chairman of the Central Committee of China Association for Promoting Democracy, Vice President of the Chinese Society of Education, Founder of Beijing New Education Experimental School

张文显 Zhang Wenxian

中国法学会党组成员、副会长、学术委员会主任，哲学博士
Member of the CPC Committee, Vice President and Director of the Academic Committee of the China Law Society, PhD in Philosophy

张守文 Zhang Shouwen

中国法学会经济法学研究会会长，北京大学法学院教授、博士生导师，教育部“长江学者奖励计划”特聘教授
President of Economic Law Research Council of the China Law Society, Professor and PhD Supervisor at Peking University Law School, Distinguished Professor with the Ministry of Education's Yangtze River Scholar Awards

黄其森 Huang Qisen

泰禾集团董事长，福建省总商会副会长
Chairman of Tahoe Group, Vice President of Fujian Chamber of Commerce

理论界授课代表 | Academic Representatives

王缉思
Wang Jisi

北京大学国际关系学院教授、博士生导师，北京大学国际战略研究院院长，中国国际关系学会副会长
Professor and PhD Supervisor at Peking University School of International Studies, Dean of Peking University Institute of International and Strategic Studies, Vice President of the China National Association for International Studies

吕 斌
Lv Bin

北京大学城市与环境学院教授、博士生导师、学术委员会委员
Professor, PhD Supervisor and Academic Committee member of Peking University College of Urban and Environmental Sciences

朱苏力
Zhu Suli

北京大学法学院教授、博士生导师，教育部“长江学者奖励计划”特聘教授
Professor and PhD Supervisor at Peking University Law School, Distinguished Professor with the Ministry of Education's Yangtze River Scholar Awards

杨立华
Yang Lihua

北京大学研究生院副院长，北京大学哲学系教授、博士生导师
Vice Dean of Peking University Graduate School, Professor and PhD Supervisor at Peking University Department of Philosophy

张 平
Zhang Ping

北京大学知识产权学院常务副院长，北京大学法学院教授、博士生导师，中国科学技术法学会副会长兼秘书长，中国知识产权研究会副会长
Executive Vice Dean of Peking University Institute for Intellectual Property, Professor and PhD Supervisor at Peking University Law School, Vice Chairman and Secretary-General of China Law Association on Science & Technology, Deputy President of the China Intellectual Property Society

张 静
Zhang Jing

北京大学社会学系主任、教授、博士生导师
Dean, Professor and PhD Supervisor at Peking University Department of Sociology

张守文
Zhang Shouwen

中国法学会经济法学研究会会长，北京大学法学院教授、博士生导师，教育部“长江学者奖励计划”特聘教授
President of Economic Law Research Council of the China Law Society, Professor and PhD Supervisor at Peking University Law School, Distinguished Professor with the Ministry of Education's Yangtze River Scholar Awards

张维迎
Zhang Weiying

北京大学国家发展研究院教授，北大市场网络经济研究中心主任，中国企业家论坛首席经济学家
Professor of Peking University National School of Development, Director of Network Economy Research Center of Peking University, Chief Economist of Yabuli China Entrepreneurs Forum

陈兴良
Chen Xingliang

北京大学法学院教授、博士生导师、学术委员会主席，教育部“长江学者奖励计划”特聘教授
Professor, PhD Supervisor and President of the Academic Committee of Peking University Law School, Distinguished Professor with the Ministry of Education's Yangtze River Scholar Awards

陈瑞华
Chen Ruihua

北京大学法学院教授、博士生导师、教学委员会主席，教育部“长江学者奖励计划”特聘教授
Professor, PhD Supervisor, Chairman of the Teaching and Learning Committee, Peking University Law School, Distinguished Professor with the Ministry of Education's Yangtze River Scholar Awards

林 一
Lin Yi

北京大学艺术学院教授、博士生导师，国家对外文化交流研究基地执行主任
Professor and PhD Supervisor at Peking University School of Arts, Executive Director of the National Center for Research into Inter-Cultural Communication of Arts

赵 宏
Zhao Hong

北京大学法学院教授，北京大学国际经济法研究所副所长，中国国际贸易经济合作研究院副院长，世界贸易组织上诉机构成员（法官）
Professor at Peking University Law School, Deputy Director of Peking University Institute of International Economic Law, Vice Dean of the Chinese Academy of International Trade & Economic Cooperation, member (judge) of the WTO Appellate Body

俞可平
Yu Keping

北京大学政府管理学院院长、教授、博士生导师，北京大学中国政治学研究中心主任
Dean, Professor and PhD Supervisor at Peking University School of Government, Director of PKU Research Center of Chinese Politics

姚 洋
Yao Yang

北京大学国家发展研究院院长、教授、博士生导师，北京大学中国经济研究中心主任，教育部“长江学者奖励计划”特聘教授
Dean, Professor and PhD Supervisor at Peking University National School of Development, Director of the China Center for Economic Research, Distinguished Professor with the Ministry of Education's Yangtze River Scholar Awards

韩大元
Han Dayuan

中国人民大学法学院教授、博士生导师，教育部“长江学者奖励计划”特聘教授
Professor and PhD Supervisor at Renmin University of China Law School, Distinguished Professor with the Ministry of Education's Yangtze River Scholar Awards

樊 纲
Fan Gang

北京大学（汇丰商学院）经济学教授，中国社会科学院研究员
Professor of Economics at Peking University HSBC Business School, Researcher of Chinese Academy of Social Sciences

潘 维
Pan Wei

北京大学中国与世界研究中心主任，北京大学国际关系学院教授、博士生导师
Director of Peking University Center for Chinese and Global Affairs, Professor and PhD Supervisor at Peking University School of International Studies

潘剑锋
Pan Jianfeng

北京大学法学院院长、党委书记、教授、博士生导师，中国法学会民事訴訟法学研究会副会长
Dean, Party Secretary, Professor and PhD Supervisor at Peking University Law School, Vice President of the Civil Litigation Law Research Council of the China Law Society

实务界对话代表 | Practitioners from Various Industries

王俊峰
Wang Junfeng
全国人大代表，金杜律师事务所全球主席，法学博士
Deputy to National People's Congress, Global Chairman of King & Wood Mallesons, J.S.D.

王辉耀
Wang Huiyao
国务院参事，中国与全球化智库（CCG）主任
Counsellor of the State Council, Director of the Center for China and Globalization (CCG)

李 一
David Li
摩根大通中国区主席兼首席执行官
Chairman and CEO of J.P. Morgan China

李 宁
Li Ning
非凡中国控股有限公司主席，李宁品牌创始人，李宁有限公司执行主席
Chairman of Viva China Holdings Limited, Founder of LI-NING brand, Executive Chairman of LI-NING Co., Ltd.

李孝如
Rupert Li
金杜律师事务所全球首席运营官，法律博士
Global Chief Operating Officer of King & Wood Mallesons, J.D.

沈寓实
Shen Yushi
国家千人计划特聘专家，世纪互联集团副总裁兼（云）首席技术官，前微软战略顾问兼中国区总监，中国云体系产业创新战略联盟秘书长，电子和计算机工程博士
National Expert of Thousand Talent Recruit Program, Vice President and Chief Technology Officer of 21Vianet Group, Inc., former Strategic Advisor and Director of Microsoft Cloud in China, Secretary-General of China Cloud OS Pioneer Strategic Alliance, PhD in Electronics and Computer Engineering

罗 川
Luo Chuan
道口贷董事长兼CEO
Chairman and CEO of Beijing Daokoudai Technology Co., Ltd.

张利平
Zhang Liping
黑石集团大中华区主席
Chairman of Blackstone Group L.P. (Greater China)

林 华
Lin Hua
中国资产证券化研究院院长，上海和逸金融董事长
Dean of China's Research Institute of Asset Securitization, Chairman of Shanghai HeYi Financial Services Co., Ltd.

陈 玮
Chen Wei
深圳市东方富海股份有限公司董事长、联合创始人，中国中小企业协会副会长，会计学博士
Founding Partner and Chairman of Shenzhen Oriental Fortune Capital Investment Management Co., Ltd. (OFC), Vice President of China Association of Small and Medium Enterprises (CASME), PhD in Accounting

金 鑫
Jin Xin
当代世界研究中心主任，“一带一路”国际智库合作联盟理事会秘书长
Dean of China Center for Contemporary World Studies, Secretary General of the Council of “The Belt and Road” International Think Tank Cooperation Alliance

周城雄
Zhou Chengxiong
中国科学院战略问题咨询研究中心副主任
Vice Dean of Center for Strategic Issues Studies, Chinese Academy of Science



宿 迟
Su Chi
北京知识产权法院原院长、审判委员会委员、审判员
Former President, Judicial Committee member and judge of Beijing Intellectual Property Court

焦 震
Jiao Zhen
鼎晖投资总裁
President of CDH Investments

谢 庚
Xie Geng
全国中小企业股份转让系统（新三板）董事长，东北财经大学博士生导师，中国金融学会常务理事
Chairman of the National Equities Exchange and Quotations (the New Third Board), PhD Supervisor at Dongbei University of Finance and Economics, Executive Director of the China Society for Finance and Banking

靳庆军
Jin Qingjun
和易集团副董事长，原深圳证券交易所上诉复核委员会委员
Vice President of Heyi Group, former member of the Appeal Review Committee of Shenzhen Stock Exchange

课程概览
PROGRAM
OVERVIEWS

The “Future Leaders” Program

“未来领袖”班

课程吸收最先进的教育经验和理念，以全球化过程中的法律实务与商业经验为基本维度，基于现实又面向未来，立足中国而放眼全球，将法律、商业与其他领域的交叉知识为内容结构，通过全新的教学方式，充分实现理论和实践、价值和经验的高度互动，培养人才的精英责任意识和卓越能力，全方位打造服务中国和人类未来的法律与商界领袖。

The “Future Leaders” Program incorporates the most advanced educational strategies and concepts. It reflects legal and business practices developing through the globalization trend. This Program is not only pragmatic but also forward-facing, using China as a platform from which to view the rest of the world. This interdisciplinary Program is designed to synchronize the knowledge of legal, business and other fields into teaching. Through innovative teaching approaches, the Program integrates theory-and-practice and values-and-experience to help develop well rounded future legal and business leaders, leaders with a strong sense of responsibility, excellence, integrity and competence.



学制 Time Commitment

高端培训提供为期一年的非脱产在职课程，学员每月须出勤三天，即每月固定周次的周五至周日。

在高端培训课程结业后，境外学员可申请继续学习1-2年攻读硕士学位，高端培训与学位教育之间的部分课程可以进行学分转换认证。

This Program is a year-long, part-time course. Participants attend classes three days each month (Friday to Sunday during the assigned week of each month).

Overseas participants who apply to a degree program after their completion of GLBE courses will be required to attend an additional one to two years of fulltime study. Course credits of this Program may be partially applied towards the respective degree program.

师资 Faculty

师资包括但不限于北京大学等世界一流大学和研究机构的教师和研究人员、金杜律师事务所等国内外知名法律服务机构的资深合伙人、政府官员、专家以及其他国内外相关行业的杰出学者与实务界人士。

The program faculty includes professors and researchers from leading universities and research institutions such as PKU, senior partners from King & Wood Mallesons and other renowned legal services providers, government officials, experts, and other acknowledged scholars and practitioners from industries in China and abroad.

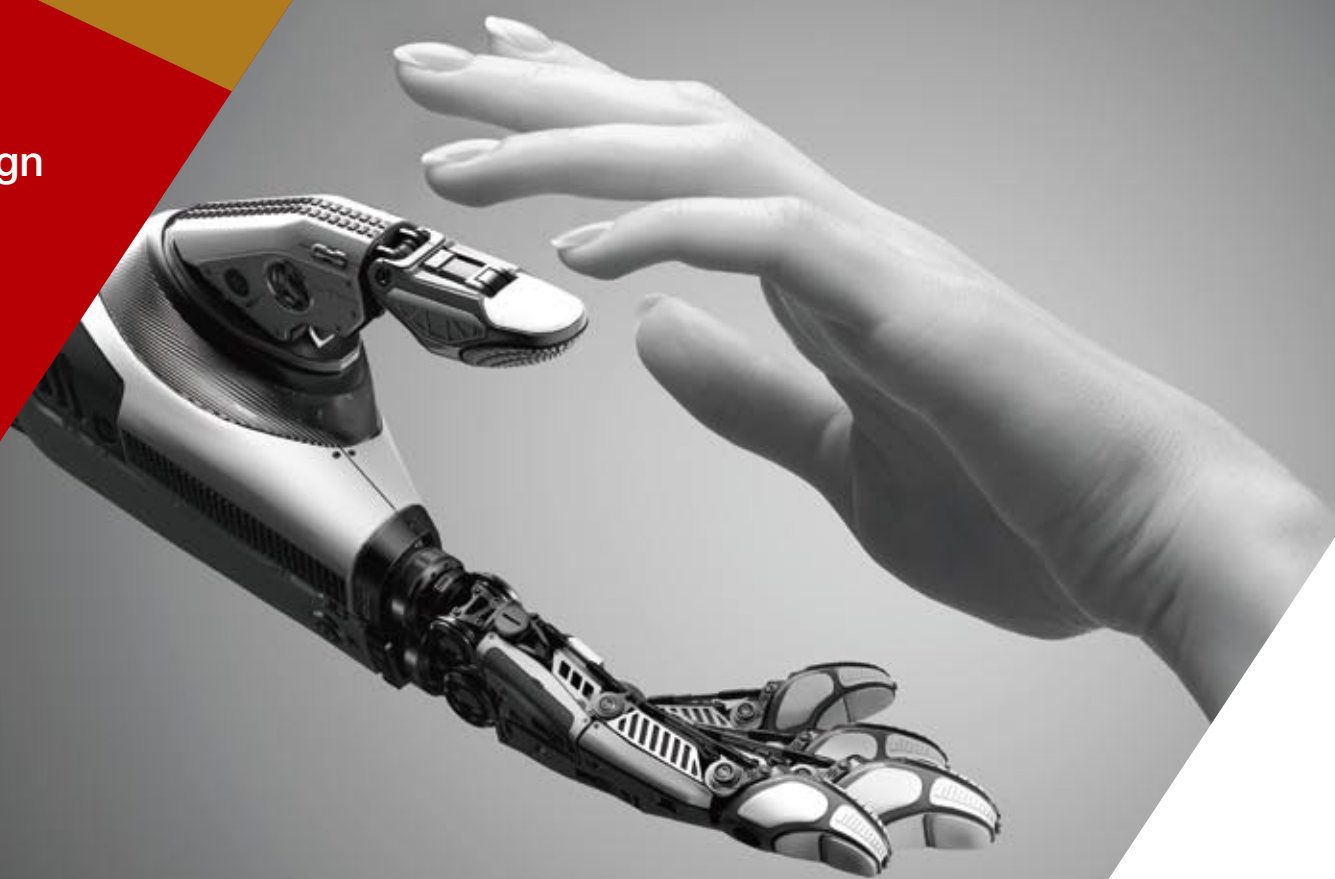
学员资质 Eligibility

学员为来自全球有志于从事法律、商业、经济以及公共管理等社会发展与社会治理事业的青年才俊。

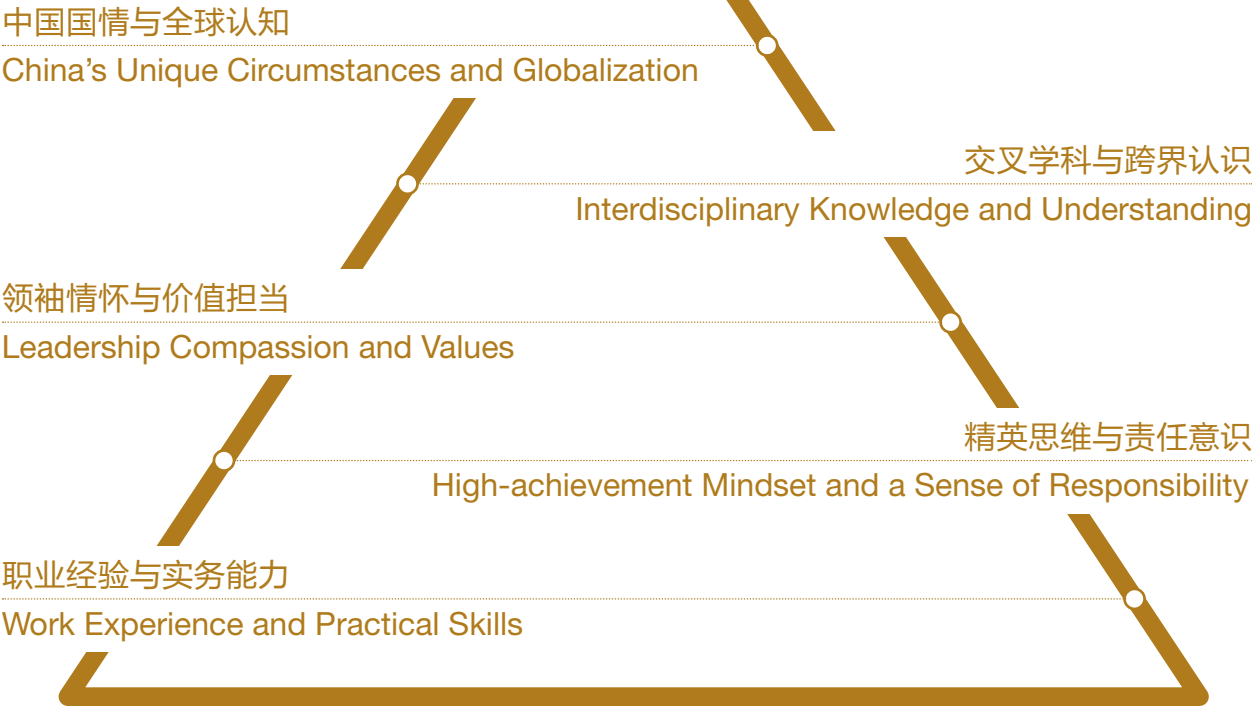
The Program is open to young aspiring leaders worldwide who are interested in furthering their careers in law, business, economics or public administration.



课程设置
Curriculum Design



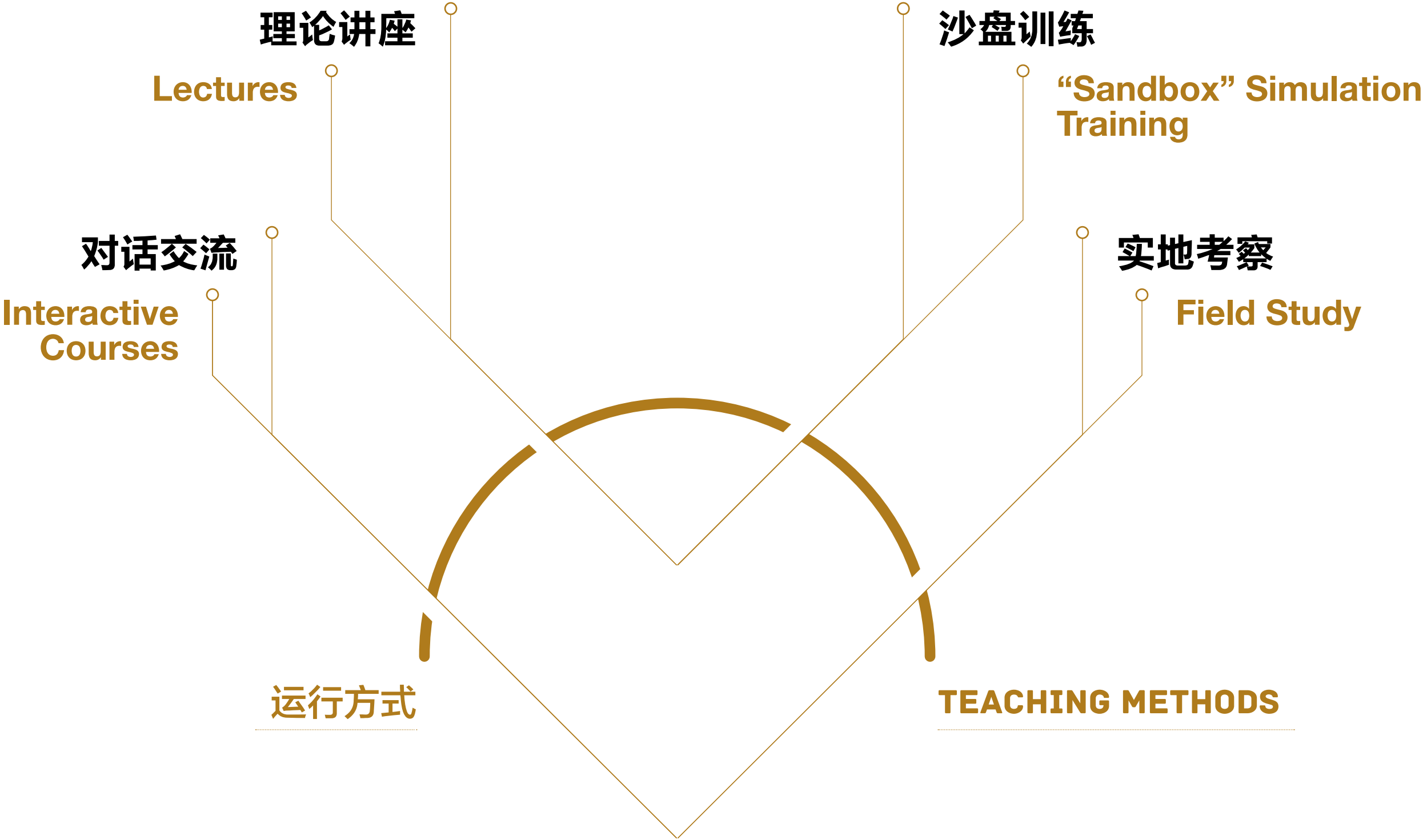
未来领袖
FUTURE LEADERS



目标定位 | Purpose and Positioning

- 深入发掘中国国情与实现全球化认知
Obtaining an in-depth understanding of China's unique circumstances and path to globalization
- 奠定人才合理的交叉学科知识基础与跨界认识
Establishing a basic foundation for developing interdisciplinary knowledge and understanding
- 培养领袖情怀与价值担当
Cultivating a sense of compassion and the values needed for effective leadership
- 训练社会精英思维与责任意识
Developing a high-achieving mindset and a sense of responsibility
- 增强商业管理与法律工作的职业经验与实务能力
Acquiring work experience and strengthening practical skills in business management and law





同学寄语

MESSAGES FROM OUR ALUMNI



潘跃海 Pan Yuehai

GLBE2017级校友
GLBE 2017 (China)

渣打银行 资深业务经理
Senior Business Manager,
Standard Chartered Bank

“跨界”和“创新”的课程思路、带有智慧与精神力量的一流师资、饱含家国情怀的全局视野，GLBE项目帮助我实现了开学伊始的全部目标，即“高度”、“深度”、“广度”的三维提升。

寄语后来的“未来领袖”同学们：道虽迩，不行不至；事虽小，不为不成。

GLBE courses addressing “interdisciplinary understanding” and “innovative thinking” were taught by knowledgeable and passionate first-tier scholars having a global vision that also comprehends national circumstances. GLBE helped me achieve my personal objectives set at the beginning of this year’s class to heighten, deepen and broaden my personal understanding and awareness.

Message for the new Future Leaders: Destination may not be far but can’t be reached if you don’t start the path. Matters may not be large but can’t be achieved unless you act.

梅杰 Mei Jie



GLBE2017级校友
GLBE 2017 (China)

思爱普（中国）有限公司中国区工商企业
事业部合作伙伴生态体系高级总监
Senior Director,
Cloud Eco, General Business, SAP China

我身处IT行业，近年来发展变化一刻未歇，冲击很大。业务模式和行业生态的改变，迫使我们更新自我学习成长的路径。在从业20年后的时间点，我选择GLBE作为自己对多年工作经验进行复盘、打补丁和升级的重要途径。GLBE以其打破常规的思路、法商融合的理念、顶尖师资的配置，帮助我为后20年的成长整理方向、补充电力。

GLBE的优势突出——它态度务实、模式创新、多种学习方式相结合，是一个兼具深度和广度的持续教育项目。讲师们高屋建瓴的视野，让我实现了对过往知识的融会贯通。比如吕斌老师与我们分享的“国家规划与地方策略”课程，帮助我更好地理解国家规划后面的配套政策，以及政策为企业家所创造的生态环境，极大地提高了我在业务工作上的格局。

I work in the IT industry which has recently seen volatility and constant change. This has had a huge impact on the mode of working and industry environment. Many of us have been forced to update our personal talent training programs. After working for 20 years, I decided to review my career and enrich my qualifications by participating in the GLBE. Its unconventional thinking, merging of legal and business training, all of which is supported by world-class faculties, have given my key career direction for the next 20 years.

GLBE is an outstanding continuing educational program with both depth and breadth. It is practical, offers innovative teaching approaches and fuses multiple teaching methods. The lecturers’ in-depth insights have enabled me to connect greater understanding of my existing knowledge base. For example, Professor Lv Bin’s class on “National Planning and Regional Strategy” helped improve my understanding on the supporting and subsidiary policies behind national planning, and how different policies nurture entrepreneurial environments. This greatly enhanced my own work understanding and potential.



俞梅 Yu Mei

GLBE2017级校友
GLBE 2017 (Singapore)

新加坡银行大中华及北亚地区执行董事
Executive Director,
Bank of Singapore, Greater China & North Asia

“未来领袖”怎能离得开“当代领袖”的指点？通过自由对话李一老师，听到他对于同学们的问题在现场毫无保留地一一作答，我们深刻体会到从运动员到商界领袖成长过程中的酸甜苦辣，升级了对‘领导力’的认知和感悟。

GLBE让我在所学所思中增进自我了解，收获了成就‘更好的自己’的信心和勇气。GLBE大家庭绝对是一个可以帮助我们增长学识、感知热忱、培养情怀、领悟智慧的集体。

How is it possible for a leader-to-be to succeed without the guidance from a current leader of our times? By talking with Mr. David Li and from his unreserved attitude towards answering questions from students, not only have we developed a deep understanding of the hardwork behind the uneasy journey of him becoming from a professional athlete to commercial leader, we were also able to better understand the true meaning of “leadership”.

GLBE is a place where we can self-reflect and understand ourselves better, giving us confidence and courage to enrich ourselves. GLBE has created a closely-knitted family which most definitely helped us in gaining knowledge, cultivating passion and developing vision and wisdom.



宋颐阳 Song Yiyang

GLBE2017级校友
GLBE 2017 (China)

清华大学法学院博士生
PhD Student,
Tsinghua University School of Law

GLBE让我能够定期从所钻研之专业当中抽出身来，就宏大叙事受大师指点，论古今中外事，臧否天下人物。俞可平老师在《推进国家治理现代化》的课堂上对40年来的中国民主治理改革进行了学术化的梳理，使我们获得了实践化的认识，实在是受益匪浅。

希望GLBE学员们：任事惟德，亨通无心。

GLBE pulled me outside of myself to completely reconsider my research subject. The GLBE scholars’ comments on and way of thinking about the past and present, China and international, are insightful and exceptional. But I benefited most from a lecture given by Prof. Yu Keping on “Promoting Modernization of National Governance”. Prof. Yu somehow managed to academically sort through and present 40 years of China’s democratic governance reform, providing practical understanding and insight into this critical process of our nation’s development.

My hope for incoming GLBE students: Serve for virtue, not for fame.

第二课堂

GLBE - FROM THE CLASSROOM AND BEYOND

GLBE珍视每位学员的长期持续发展，致力于为学员搭建互助互利、资源共享、信息互通、终身学习的国际平台和校友网络，使每位学员在事业的不同阶段获得量身定制的助力与提升。GLBE学员有机会参加诸多课外活动，包括但不限于：

- 参加北京大学法学院和金杜学院举办的各类讲座、沙龙、论坛；
- 持续参加GLBE课程中向不同期学员开设的通选类课程和网络课程；
- 持续获得在法律和商业领域资深人士的个人发展顾问指导，就职业发展的各类问题与顾问沟通互动，获得一对一建议和支持；
- 就读课程期间可使用北京大学法学院的图书馆、法律数据库资源，并可获助旁听北京大学所有开放类课程；
- 课程结业后可优先获得在金杜律师事务所全球办公室或主办方战略合作单位的实习或工作机会。



GLBE values the long-term personal development of each participant and is committed to establishing a global alumni network to facilitate ongoing cooperation, resource sharing, information exchange and lifetime learning. We aim to provide tailored assistance and support for participants who are at varying stages in their careers. GLBE participants will enjoy benefits beyond their classroom experience including:

- Eligibility to attend various lectures, salons and forums hosted by PKU Law School and KWM Academy;
- Eligibility to participate in all GLBE general courses and online sessions open to GLBE participants and alumni;
- Ability to receiving one-on-one career support and guidance from experts in the business and legal industries;
- Access to the library and legal databases of PKU Law School and eligibility to attend all PKU open courses, during the Program; and
- Priority for GLBE participants and alumni in applying for any internships and fulltime jobs at King & Wood Mallesons' global offices or other strategic partners of GLBE.

具体招生和项目运行信息

ADMISSIONS AND ENQUIRIES

获取与GLBE课程设置、师资与报名有关的信息，请访问北京大学法学院官方网站（ www.law.pku.edu.cn ），或访问GLBE官方网站（ www.kwmacademy.com ）（ 推荐 ），或致电招生团队电话：
+8610-62767331/62758067/56612447。

Should you have any questions about GLBE, its faculty or admissions details, please visit the official website of Peking University Law School: www.law.pku.edu.cn, or the official GLBE website: www.kwmacademy.com (Recomended). You may also directly contact the admissions team on +8610-62767331/62758067/56612447 for more details.

www.kwmacademy.com 



